



Membership Brochure

Business in the Community Ireland

Business in the Community Ireland (BITCI) is a movement for sustainable change in business. Our purpose is to inspire, challenge and facilitate businesses to bring about a sustainable, low carbon economy and more inclusive society where everyone thrives.

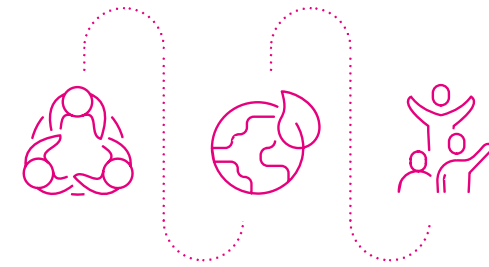
For over 25 years, we've been trusted advisers in Sustainability and **Economic, Environmental, Social**, and **Governance** (EESG), ensuring our network of businesses builds capacity, ambition and leadership. BITCI is a non-profit organisation bringing objectivity and passion to our collective purpose.

“We believe in long term partnership with companies. We aim to create mutually beneficial relationships and earn our place as Trusted Advisers “





Supporting and Achieving Change



BITCI brings a wealth of experience, specialisms and connections into all areas of our work. Our expert staff are best in class in topics spanning carbon, nature, social impact and strategy development. Our primary focus is on:

Sustainability Services

Leading on all aspects of EESG, we work collaboratively with members to embed sustainability into all areas of their business model. Our team guarantee to strike the balance between ensuring businesses achieve their core purpose, meet regulatory requirements and enhance its future viability while protecting the planet and its people. Our members benefit from bespoke one-to-one advisory support and expertise, group workshops, learning and networking events from our comprehensive events calendar and access to our collective initiatives – all seeking to drive greater ambition, collaboration and performance in sustainability.




Inclusive Workplace and Communities


We lead on initiatives to tackle educational disadvantage and to secure employment opportunities to create more inclusive workplaces. Our nationwide education programmes empower corporate volunteers to share valuable soft skills, real-world industry knowledge and career insights with DEIS students that need them most. These nationwide programmes benefit over 4,500 pupils annually and are run at primary and secondary level. They enhance pupils' literacy and numeracy skills, offer work placements and widen their network. Our employment programmes enable companies to support and tap into the skills of jobseekers who experience high barriers to employment. Groups we work with include refugees, asylum seekers, people with disabilities and health issues, women returners and members of the Traveller community.



Top 10 benefits of joining our network




1. Join a movement of businesses spanning multiple sectors to advance your EESG and sustainability journey. Through engaging in our network, your individual and collective voice can share and celebrate your sustainability achievements, while ensuring you learn from others and widen your range of contacts and insights.



2. Our approach is member focused, delivering services based on your priorities. Your dedicated and experienced BITCI Sustainability Adviser guides your access to the most relevant BITCI services to create maximum impact for your business, with regular one-to-one consultations and monthly updates.



3. Upskill and build your capacity by participating in our comprehensive programme of events, training workshops, peer-to-peer support and member CEO Forums.



4. Build a more inclusive workplace by participating in our collective initiative, the Elevate Pledge



5. Demonstrate your commitment to the decarbonisation of your business by participating in our collective initiative, the Low Carbon Pledge.



6. Our unique Business Working Responsibly Mark, Ireland's leading standard for sustainability and EESG will ensure you navigate the evolving mandatory requirements and integrate EESG and sustainability into your business. The Mark is independently audited. The benefits of attaining the Mark include improved employer brand, winning tenders, enhanced investor relations and attract / retain talent. Once attained the Mark is valid for 3 years



7. Access our proven and impactful employee engagement programmes to become an inclusive employer, enhance social impact in local communities and improve educational outcomes for local DEIS pupils. We offer a range of programmes that can meet your needs.



8. Access sustainability management tools, including guides, frameworks and benchmarks to meet your needs.



9. Access leading practice and latest research to guide senior leadership and operational teams to achieve high sustainability impacts.



10. Join a platform to share and celebrate your success and communicate your sustainability stories.

Our Members A NETWORK OF LEADING ORGANISATIONS



The Network for Sustainable Businesses

Our approach is member focused so we will deliver services based on your priorities. Our team will support you to design, refine and implement your own sustainability solutions. Our needs-based **Member's Action Plan** is agreed collaboratively and tailored to your business.

We offer three streams of membership which can help companies at any stage of their sustainability journey.

Under each membership stream, Members have access to our comprehensive events programme, toolkits, collective action Pledges plus a specific allocation for one-to-one support services and projects.

The allocations for one-to-one services vary by each stream with Engage having access to the equivalent of 6 BITCI days, Strategist the equivalent of 10 BITCI days, and Leader the equivalent of 12 BITCI days. **Please note Member's Action Plan with one-to-one support exceeding these allocations receive a preferential payment rate.**

"We nurture collaboration between members to achieve innovation and knowledge transfer"





ENGAGE MEMBERSHIP

Engage your employees and make a positive impact in your community.

Join this stream if you are looking to connect your company with your community and engage your employees. We offer access to a wide range of corporate volunteering opportunities with a focus on education and employment through our programmes.



STRATEGIST MEMBERSHIP

Measure and improve your sustainability.

Join this stream if you want to assess your current EESG and sustainability practices and need support in developing an integrated strategy throughout your business. We guide senior leadership and operational teams to achieve high sustainability impacts. Accessing the Business Working Responsibly Mark is also included in this stream of membership.



LEADER MEMBERSHIP

Join this stream if you have demonstrated maturity in sustainability and want to show leadership through progressive collaboration and CEO level networking and exchange. **Companies in this stream are either certified to the Business Working Responsibly Mark or hold equivalent externally validated credentials.**

By joining the BITCI Leaders' Group on Sustainability you get to tackle today's sustainability business challenges and collaborate with CEO's from other leading companies.

MEMBERSHIP PLAN	ENGAGE	STRATEGIST	LEADER
Dedicated Account Manager providing monthly updates, one-to-one consultations and oversight on the delivery of your tailored annual Members' Action Plan.	✓	✓	✓
Access to a comprehensive range of one-to-one services e.g. decarbonising supply chain, brokering charity partnerships, strategy development etc.	✓	✓	✓
Collective initiatives including the Low Carbon and Elevate Pledges.	✓	✓	✓
Group workshops, learning and networking events – over 30 held annually (online or in-person).	✓	✓	✓
Access to BITCI's Education and Employment Programmes to enhance social impact.	✓	✓	✓
Business Working Responsibly Mark - Certification Process.		✓	✓
Tailored Sustainability Solutions - workshops, guidance, strategy development		✓	✓
CEO Leaders' Series giving peer-to-peer networking			✓
Leadership sessions for Executive Sponsors & practitioners.			✓
Participate in innovative & collaborative projects			✓
Annual Donation	€11,000	€16,500	€22,000

Project Work

We work with organisations on bespoke projects around key EESG and sustainability issues. Contact us to discuss your project needs and scope, and to understand how we can support you.

Find Out More

If you wish to join our movement for change and discuss any of our services, please contact our Membership Executive.

Patricia McNamara, Membership Executive.

BUSINESS
IN THE
COMMUNITY
IRELAND

3rd Floor Phibsborough Tower
Phibsborough Road, Dublin
D07 XH2D

T: + 353 1 874 7232

E: pmcnamara@bitc.ie



“We work with members to build capability and confidence, ensuring they have ownership of solutions and can measure progress”

